

# EUBREWNET

A European Brewer Network

*John S Rimmer*

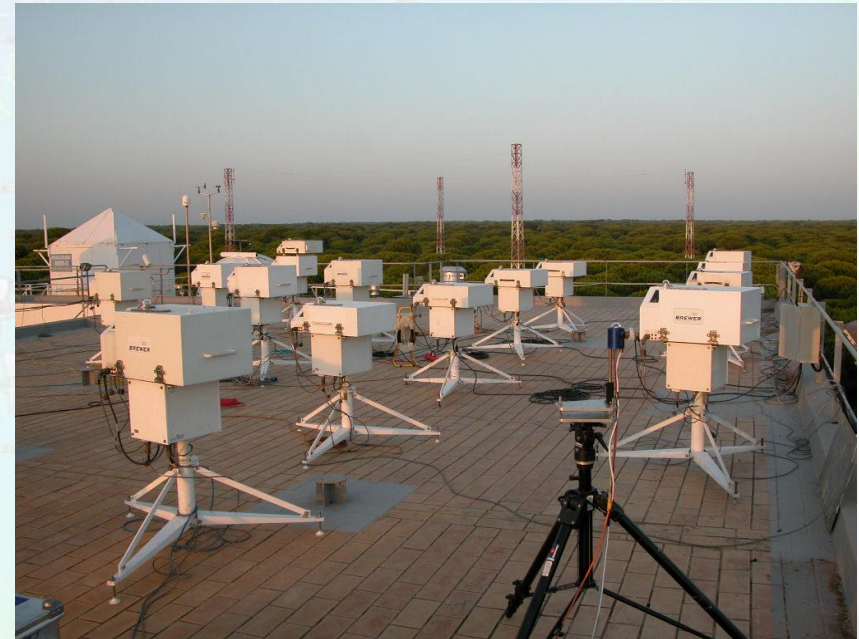
*University of Manchester, UK*

# Outline

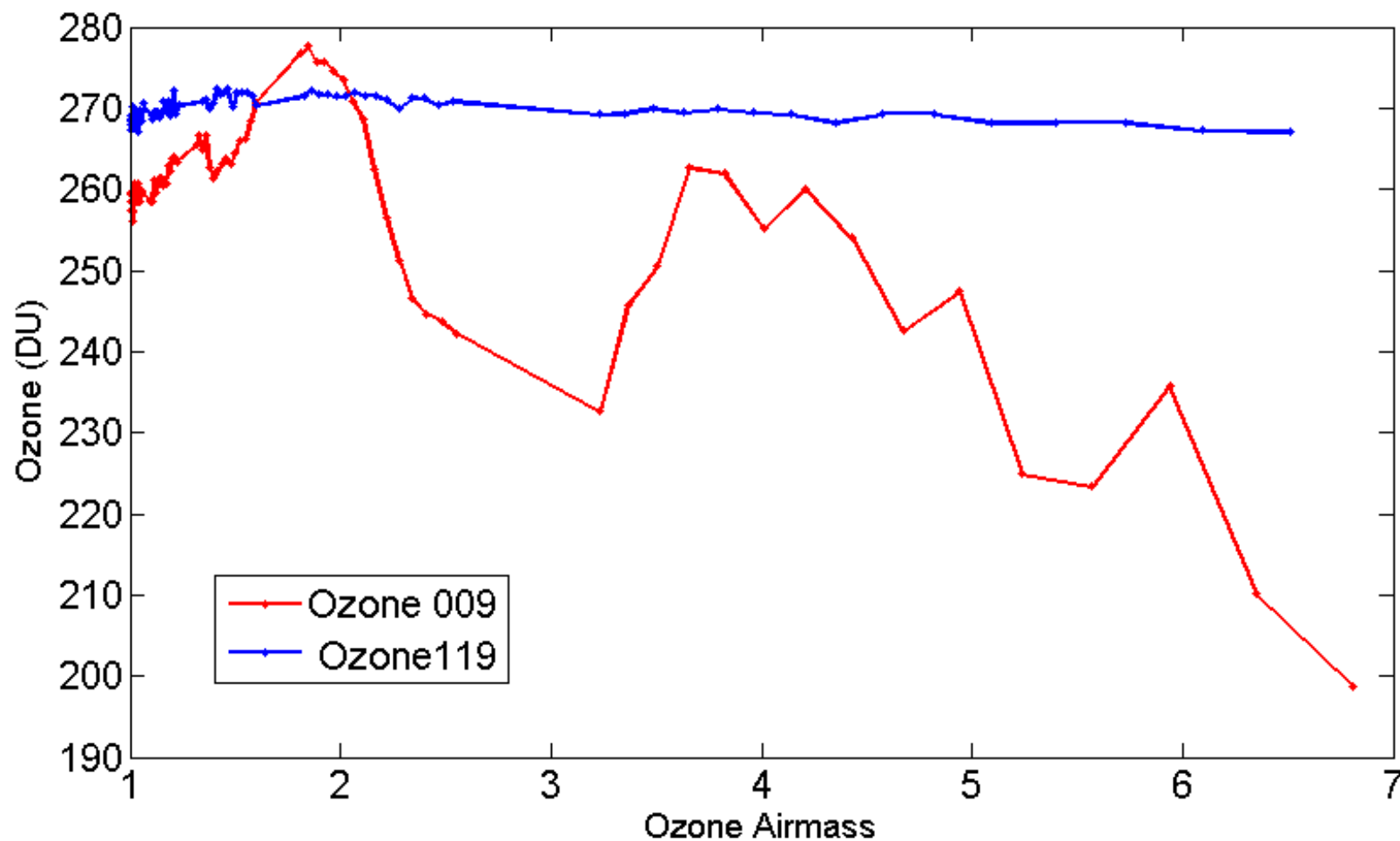
- Aims of Eubrewnet.
- Motivation.
- Networking.
- Implementation.
- Recommendations.

# Aims

- A spatially consistent network of Brewer Ozone Spectrophotometers.
- Characterisation of instruments.
- Calibration for all data products.
- Common data processing algorithms.
- Central database.
- Central processing and QA/QC



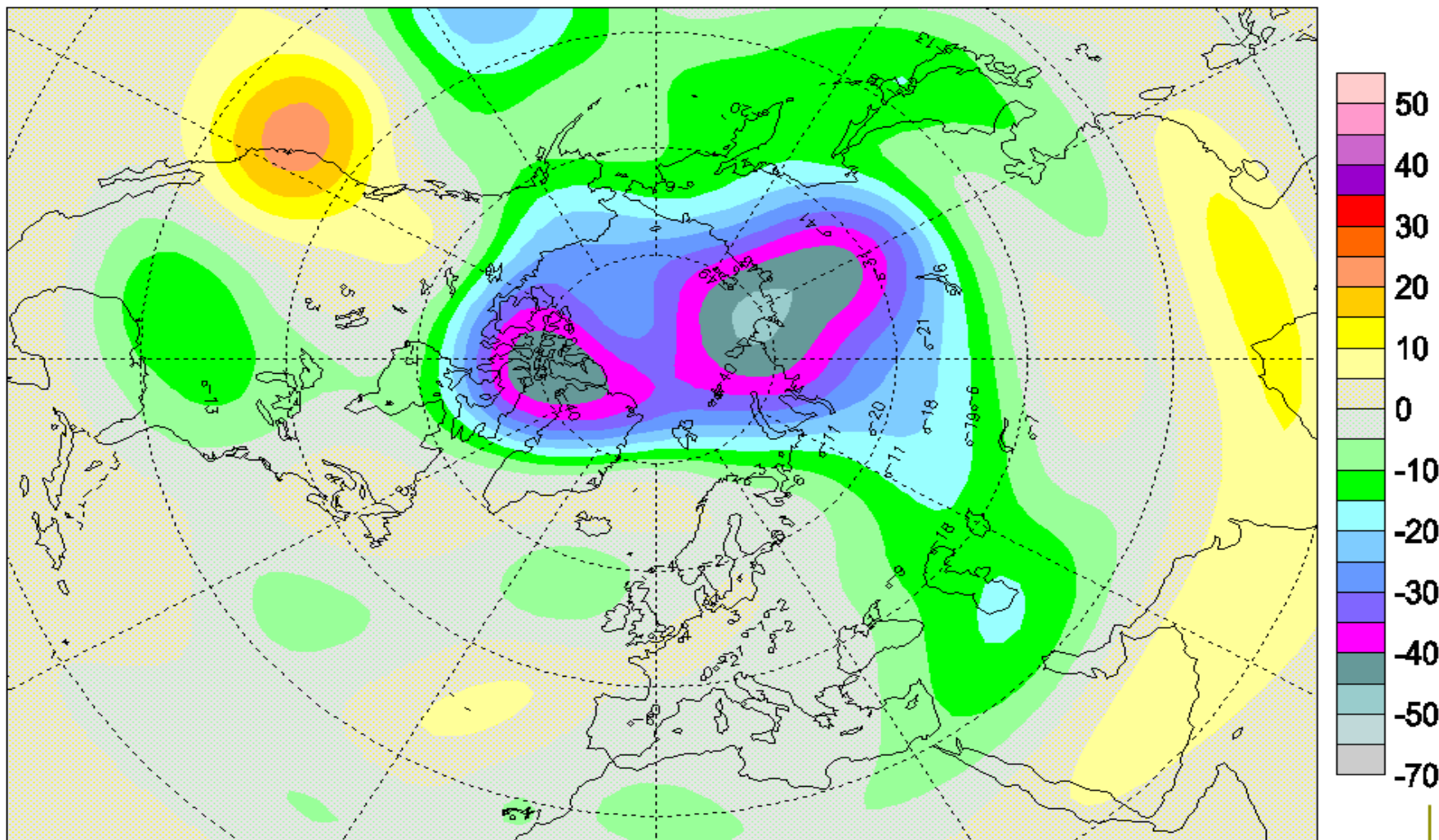
# Double vs Single Brewer





# 2011 Arctic Ozone Loss

Deviations (%) / Ecart (%) , 2011/03/20



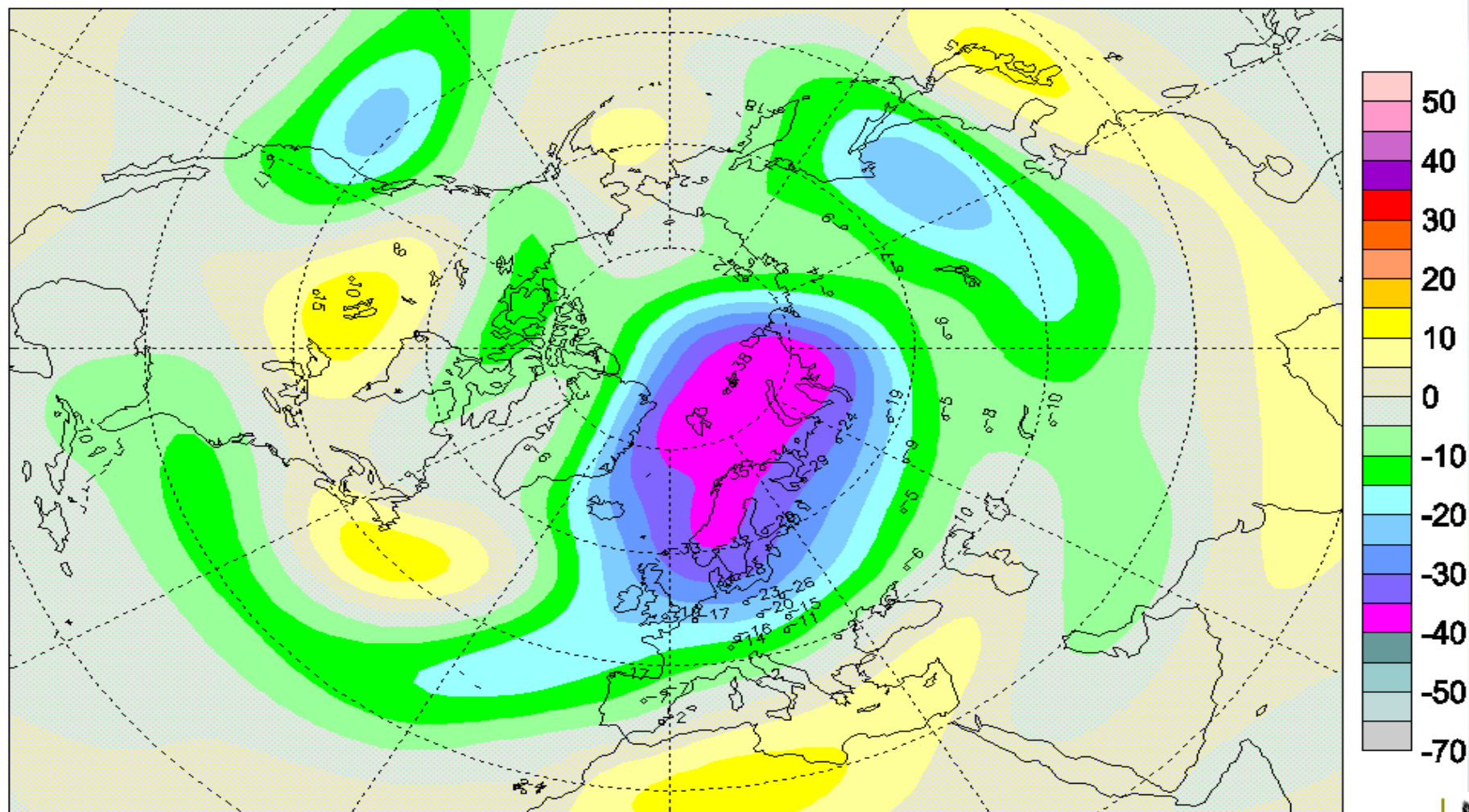
UNEP/WMO Ozone Research Managers Meeting, Geneva, 14th  
- 16th May 2014



Department  
for Environment  
Food & Rural Affairs

# 2011 Arctic Ozone Loss

Deviations (%) / Ecart (%) , 2011/03/30

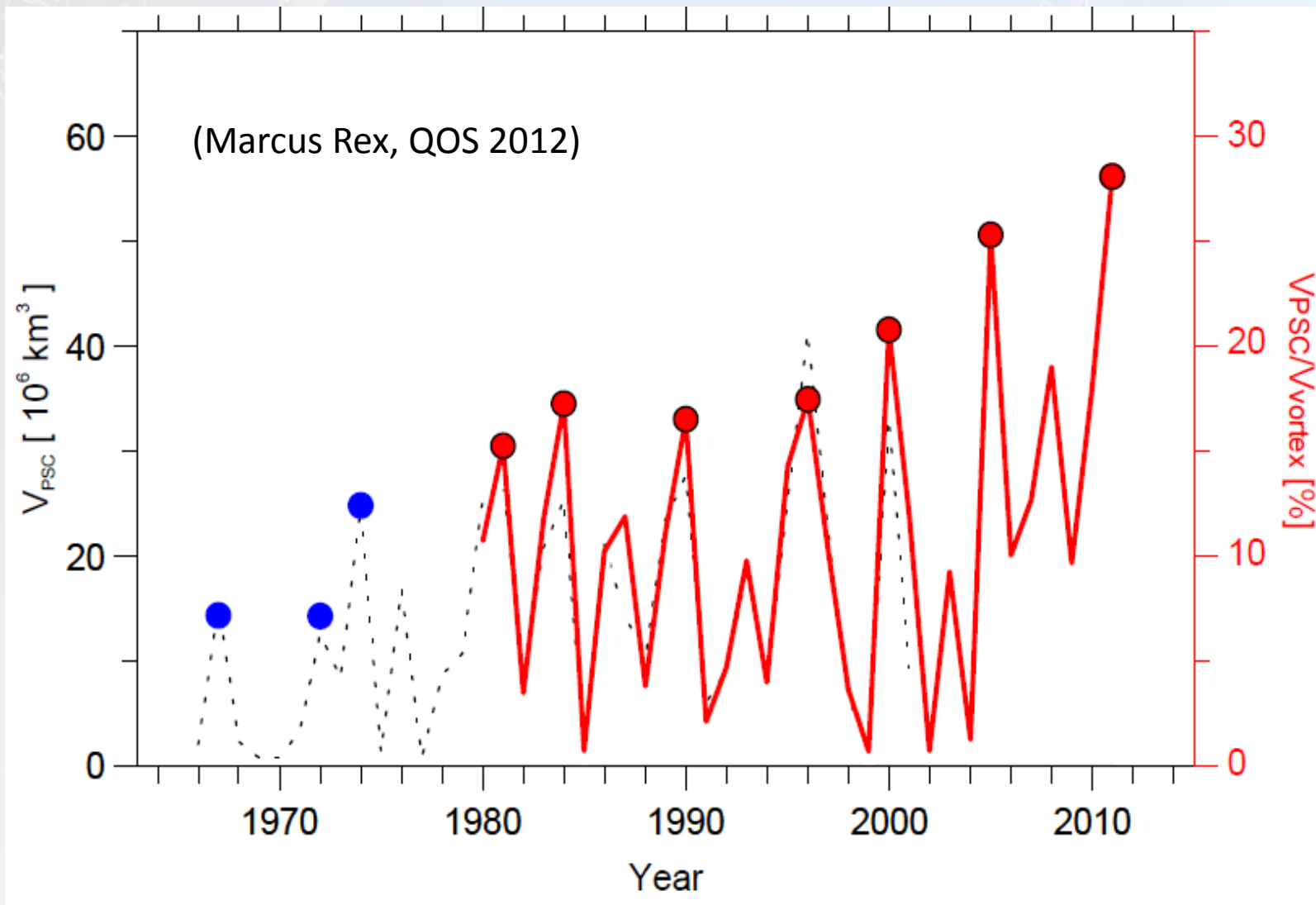


UNEP/WMO Ozone Research Managers Meeting, Geneva, 14th  
- 16th May 2014



Department  
for Environment  
Food & Rural Affairs

# Potential for PSC formation





# COST Action ES1207

- June 2013 – May 2017.
- Networking.
- Training Schools.
- Short Term Scientific Missions.
- Workshops/Conferences.
- Dissemination.





# European Members

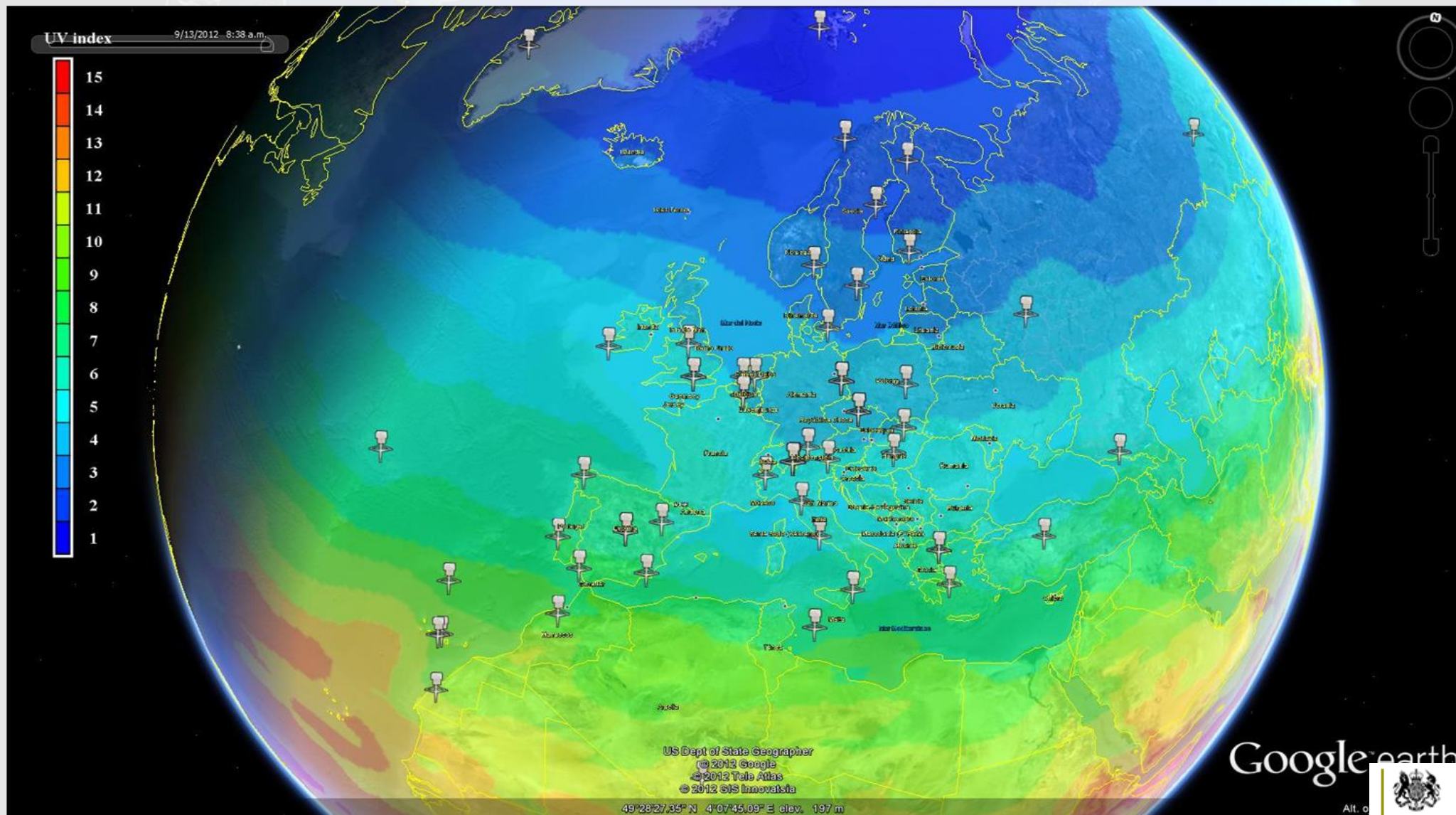
- AT, BE, CH, CZ, DE, DK, EL, ES, FI, HU, IE, IT, NL, NO, PL, PT, SK, SE, TR, UK

## Non-European Partners

- NOAA (USA).
- York University (CA).
- International Ozone Services (CA).
- WMO.



# The Network



UNEP/WMO Ozone Research Managers Meeting, Geneva, 14th  
- 16th May 2014



Department  
for Environment  
Food & Rural Affairs



# Implementation

- Automated data transfers to central database beginning Sept 2014.
- Calibration data stored in central data base.
- Site and instrument characterisation.
- Central data processing in addition to station processing.
- Central re-processing.
- Central QA/QC systems.
- Near real time data.
- Link to WOUDC.

# Recommendations

- Cooperation,
- Collaboration,
- Interaction,
- Extended networking.





UNEP/WMO Ozone Research Managers Meeting, Geneva, 14th  
- 16th May 2014



Department  
for Environment  
Food & Rural Affairs